



Series CWFA

Contacting Head Watermeters



The CWFA Series of contacting head watermeters are coated cast iron bodied watermeters intended for the measurement of clean water.

Typical applications are water supplies to industrial premises, evaporative cooling tower make up, electro plating line water supply or any other piece of process plant requiring the volume water flowing in it to be accurately measured and totalised.

The method of measurement is by high sensitivity turbine impulse sender which is magnetically coupled to drive the large accurate gear train to provide both a totalisation and digital output.

The totalisation is displayed on a mechanical non-resettable counter and the digital output is by voltfree contacts proportional to the flow rate.

The reed switch provides an impulse rate factory selectable depending upon the size of water meter selected, this should be specified when ordering.

The Watermeters are of simple design & construction designed to provide reliable, accurate and dependable measurement and control.



Cost Effective Measurement



Sizes From 2" to 8"



Flange mounting



Flow Rates From 15 to 365 M³/Hr



Low Pressure Drop



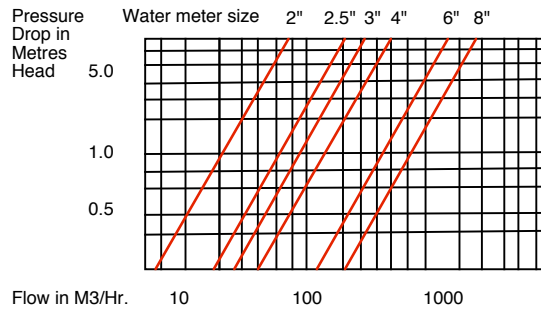
Maximum Pressure 16 Bar



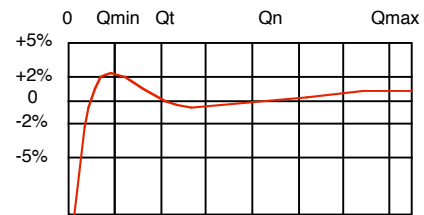
Technical Characteristics

Meter Size	Inch mm	2" 50	2 1/2" 65	3" 80	4" 100	6" 150	8" 200
Start flow	M3/Hr.	0.4	0.4	0.4	0.6	1.8	2.0
Max temporary flow	M3/Hr.	30	50	80	120	300	500
Flow 1 m head loss	M3/Hr	20	55	90	140	410	610
Normal flow	M3/Hr.	15	25	40	60	150	250
Min.flow for 2% accuracy	M3/Hr.	3.0	5.5	7.0	12.0	8.0	8.5
Min.flow for 5% accuracy	M3/Hr.	1.2	2.0	2.5	3.5	4.5	7.0
Max working pressure	Bar	16	16	16	16	16	16
Min reading	Litres	1	1	1	10	10	100
Max reading	M3	10 ⁶	10 ⁶	10 ⁶	10 ⁷	10 ⁷	10 ⁸
Impulses /Litre standard	Imp/L	4/10	4/100	4/10	4/100	4/100	4/1000

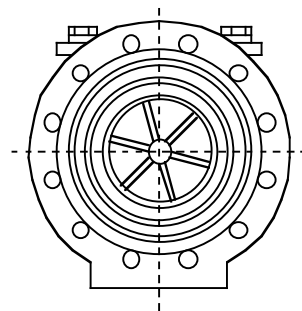
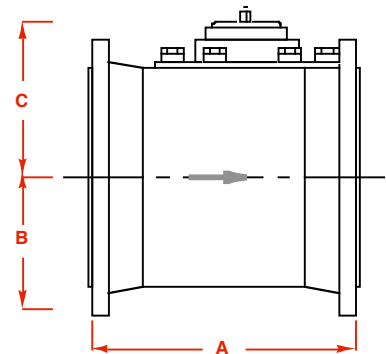
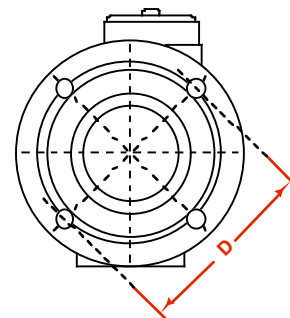
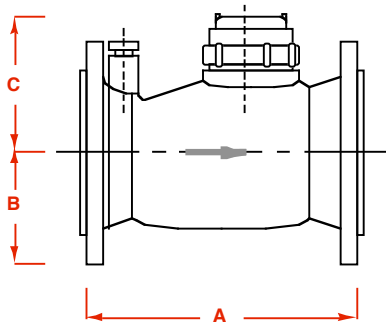
Pressure Drop



Error Curve



Dimensions



Dimensions

Meter Size	Inch	2"	2.5"	3"	4"	6"	8"
	mm.	50	65	80	100	150	200
Length	A mm.	200	220	230	280	300	350
Height	B mm.	135	150	155	155	210	210
Diameter	C mm.	165	185	200	225	283	340
Holes PCD	D mm.	125	145	160	180	240	295
Number of holes		4	4	8	8	8	12
Weight with fittings	Kg.	9.5	10.0	16.0	20.0	39.0	52.0

AWE

Automated Water & Effluent Ltd

AWE House Antom Court, Tollgate Drive, Beaconside, Stafford, ST16 3AF UK.

Tel: 01785 254597 Fax: 01785 257724

www.awe-ltd.co.uk email sales@awe-ltd.co.uk