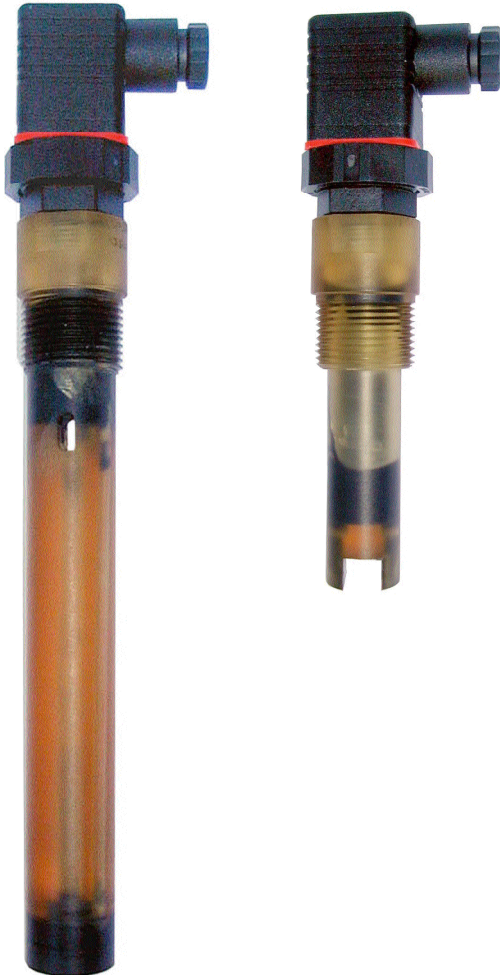
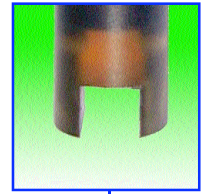




Model CP721 Insertion Conductivity Cells



- * Withstands Solutions up to 120°C.
- * High Quality Peek & Graphite Sensor.
- * Detachable Connector
- * Cell K = 1.0 or K = 10.0
- * Option for Built in Auto Temp

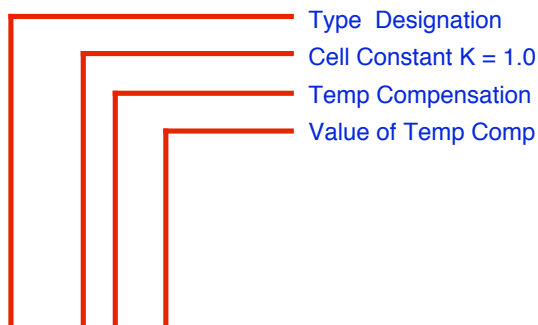
The CP721 series of Electrolytic Conductivity measuring cells are designed for the measurement of Electrolytic Conductivity directly in tanks, vessel and large bore pipe work.

The cells are of simple robust construction manufactured from peek & epoxy resin with carbon electrodes, mounted into a 3/4" B.S.P. male threaded boss and fitted with a detachable connector for ease of servicing.

As the cells and the mounting threads are all of the same material the problems of cycling temperatures and differing coefficients of expansion causing premature failure are eliminated.

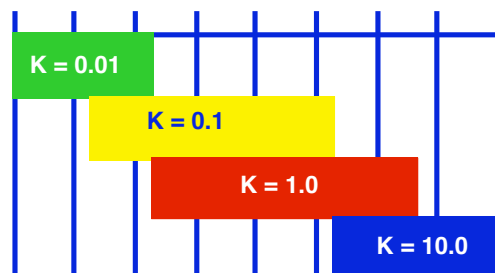
The CP721 series of cells maybe supplied with automatic temperature compensation to suit most popular manufactures conductivity instruments.

Typical applications include water purity control, solution strength control, C.I.P. detergent strength control in food and dairy industries and steam condensate return measurement.



CP721-100 -T-Pt100

0.01µS 0.1 µS 1.0 µS 10 µS 100 µS 1mS 10mS 100mS 1000mS



Approximate Ranges Of Measurement For Conductivity Cells

Specifications

Materials of Construction

Cell constant

Measurement range

Max. temp.

Max. pressure

Auto. temp. comp.

Mounting

Insertion Length

Connections

CP721 Conductivity Cells

Peek, epoxy resin & carbon

Manufactured with K = 1.0 and K = 10.0

Depends up the instrument being used typically
K = 1.0 upto 50.0 mS & K = 10.0 upto 500.0 mS

Peek. 120 °C

10 Bar at 20 °C

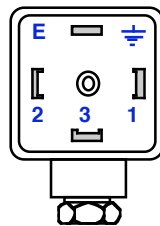
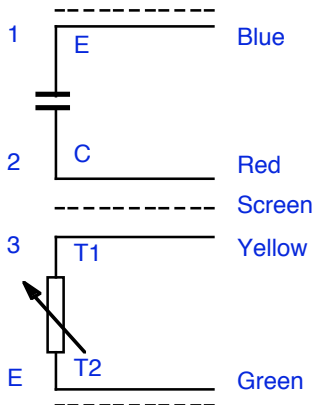
Maybe mounted into the cell
as required by the instrument in use

By 3/4" BSP male thread

Standard 50 mm K = 1.0 & 150 mm K = 10.0

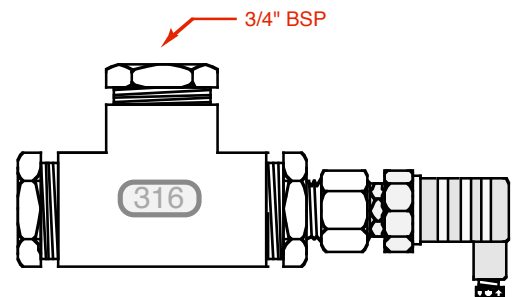
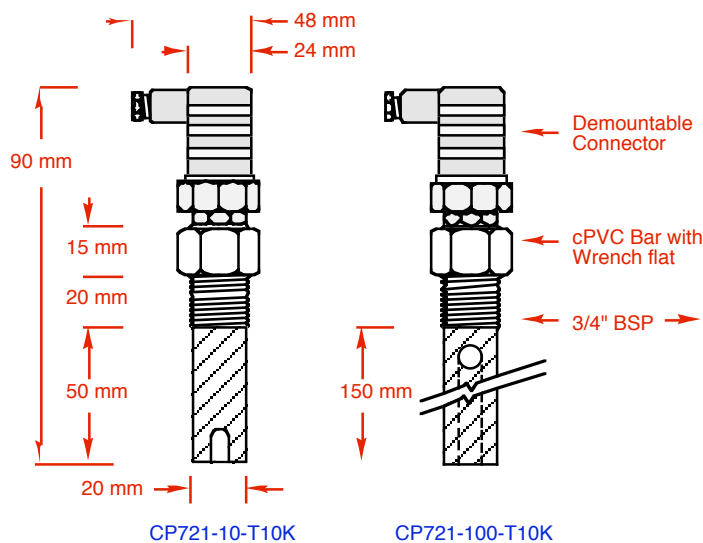
Standard by demountable connector

Connections



Use LMK2 cable for cells without Auto Temp Comp for cells with auto temp comp fitted used LMK4 connecting cable. The screen should be earthed at the instrument but not connected at the cell end max cable length 25 metres

Dimensions



For inline holders for CP721-100 Cells which have an 150 mm insertion length, please call our sales office on 01785 - 254597

Stainless Steel Tee & CP721-10 Cell

AWE

Automated Water & Effluent Ltd

AWE House Antom Court, Tollgate Drive, Beaconside, Stafford, ST16 3AF UK.

Tel: 01785 254597 Fax: 01785 257724

www.awe-ltd.co.uk email sales@awe-ltd.co.uk